

Epitome of
Elegance

PREMIUM SANITARYWARE

COMPANY PROFILE

JCBL Group is a leading business conglomerate. From an early foray into mobility solutions space to staying abreast of the latest technologies, JCBL Group today has a strong presence across diverse sectors of economy such as automotive, construction & infra building, logistics, healthcare, parts & components for railways and buses, agriculture, defence and many more. At present we have 5 manufacturing plants, 21 Automobile dealerships with various offices catering to our diverse customer profile. Our Group turnover is over USD 280 million.

JCBL India is the international face of JCBL Group we are currently exporting to South East Asia, Middle East, Africa, Europe, South America, USA and Russia. Furnishing and Construction division is the one stop destination for complete range of JCBL Sanitary ware, High Pressure Laminates, Tiles and Faucets.

JCBL Sanitary ware brings to you, best quality sanitary products with continuous adaptation to new market trends. JCBL's products are the result of a manufacturing process that takes them at the frontline of world technology. Our motto is to provide the products with topmost quality that are driven by modernization and extraordinary design that conform to the international standards.

The depth of our variety in size, color, finish and functionality makes our sanitary ware collection an ideal choice for Architects and Interior Designers thus making JCBL India a reliable source for Sanitary ware for customers across the Globe.

“JCBL Premium Sanitaryware collection showcases modern and timeless designs built with supreme premium quality to reflect your luxurious lifestyle. We offer you the chance to bring ultimate craftsmanship into your space by adding soul and beautifying every corner.”

INDEX

■ 01	ONE PIECE	
■ 08	WALL HUNG	
■ 14	TABLE TOP	
■ 32	PEDESTAL BASINS	
■ 34	HALF PEDESTAL WASH BASINS	
■ 36	ONE PIECE WASH BASINS	
■ 37	WASH BASINS	
■ 38	COUNTER BASINS	
■ 40	URINAL	
■ 41	TECHNICAL DRAWING	



your global partner

PREMIUM SANITARYWARE



One Piece

Wall Hung

Water Closet



AQUA
OP-1

680x350x770mm
Syphonic 300mm



CRETA
OP-2

680x360x790mm
S-Trap 230mm | P-Trap 180mm





METRO

OP-3

650x360x720mm

S-Trap 230mm | P-Trap 180mm

VENUS

OP-4

675x380x775mm

Syphonic 200mm



Syphonic
Flushing



CRISTY OP-5

715x370x690mm
S-Trap 225mm | P-Trap 180mm



CAMRY OP-6

710x360x680mm
S-Trap 230mm | P-Trap 180mm



CARGO OP-7

690x370x700mm
S-Trap 240mm | P-Trap 180mm



BABY OP-8

505x280x570mm
S-Trap 140mm

**VENICE
OP-9**

660x360x750mm
Syphonic 300mm



Syphonic
Flushing



**CHERRY
OP-10**

645x335x740mm
S-Trap 225mm | P-Trap 180mm



ELISA OP-11

700x360x720mm
S-Trap 225mm | P-Trap 180mm



CHARLY OP-12

680x360x720mm
S-Trap 230mm | P-Trap 180mm



STROM OP-13

680x370x730mm
S-Trap 230mm



FOGO OP-14

705x360x740mm
S-Trap 225mm | P-Trap 180mm

**FLORENCE
OP-15**

695x360x780mm
Syphonic 300mm



**ALBA
OP-16**

630x360x710mm
Syphonic 225mm



LACERA OP-17

730x360x800mm
Syphonic 225mm



MONALISA OP-18

685x360x740mm
Syphonic 220mm



DENIAM OP-19

665x360x735mm
S-Trap 230mm | P-Trap 180mm



ZINNIA OP-20

680x360x770mm
Syphonic 225mm



VITO
WH-1
540x390x340mm



ELEMENT
WH-2
545x365x360mm

ARIN
WH-3
510x360x355mm



AERON
WH-4
500x360x360mm





ZITA
WH-5
510x360x350mm



ELEGANT
WH-6
490x350x340mm



CRUSE WH-7
535x370x365mm



AUDI WH-8
500x355x360mm



CALIBER WH-9
500x360x340mm



WATER CLOSET

RUBY WH-10
550x360x410mm



DYNA
WH-11
555x380x350mm



COCO
WH-12
535x370x360mm



CROMA
WH-13
500x360x365mm



RIMLESS DESIGN



SOFT CLOSE



TAKE-OFF SYSTEM



GLAZED SIPHON



NORM WH-14
570x360x320mm



MINI ELEMENT WH-15
490x350x350mm



your global partner

PREMIUM SANITARYWARE



BASINS

Table Top | Pedestal Wash Basin | Half Pedestal Wash Basin
One Piece Wash Basin | Wash Basin | Counter Basin



BERLIN
TT-1
 550x430x140mm



SCOLA
TT-2
 620x420x100mm



BRUNA
TT-3
605x400x140mm



ETHOS TT-4
385x385x415mm



HELIX
TT-5
610x345x110mm



ELENA
TT-6
560x385x120mm



ELIPS TT-7
710x385x145mm



MONTIJO TT-8
635x450x115mm



JAZZ TT-9
500x375x110mm



MINI JAZZ
TT-10
410x310x110mm



MADRID TT-11
360x360x130mm



FLORIDA TT-12
380x380x120mm



MARVEL TT-13
415x415x140mm



SOFT TT-14
380x380x130mm



5mm Thickness

Thin Rim

Elegant THIN EDGE basin with fine edges that is only 5 mm in thickness.
The Attractive clay art is made by the innovative material used by IDEE.



Extremely
Light
Weight



Perfectly
Glazed



MINI STEELA TT-15
455x335x140mm

SOPIE
TT-16
520x380x150mm





ASTRON
TT-17
460x310x135mm



JEFF
TT-18
410x300x125mm



SIGMA TT-19
405x330x105mm



STEELA TT-20
500x400x145mm



RECTA TT-21
450x350x120mm



BRUCK TT-22
340x340x140mm



NEON TT-23
420x420x120mm



PRISAM TT-24
410x310x125mm



MAX TT-25
420x300x130mm



PEARL
TT-26
580x420x85mm



SMART
TT-27
475x475x80mm



STAR
TT-28
655x420x140mm



OPAL
TT-29
685x400x105mm



SAFRY TT-30
580x410x95mm



AMPLE TT-31
455x310x135mm



RITZ TT-32
355x305x135mm



ROSA TT-33
580x410x160mm



CORIS
TT-34
535x415x125mm



RIO
TT-35
635x400x155mm



MARRY TT-36
415x300x130mm



ORCHID TT-37
420x420x100mm



KOROLINA TT-38
590x380x120mm



DOME TT-39
590x415x100mm



PRIME
TT-40
535x410x160mm



SPIRIT
TT-41
410x375x120mm



SPELL TT-42
610x510x140mm



TULIP TT-43
660x420x115mm



OMINI TT-44
400x335x140mm



RUBIC TT-45
500x370x150mm



REPOSE
PB-1
585x460x825mm

LORAL
PB-2
550x445x850mm



COLADO
PB-3
510x420x830mm



PLAZA
PB-4
570x435x845mm



CANAN
HP-1
560x410x475mm



POLITE
HP-2
515x405x450mm



ALTIN
HP-3
500x370x460mm



MORIS
HP-4
405x295x400mm



SIMI
HP-5
455x345x410mm



PETAL
HP-6
440x340x445mm



COMPAQ
OB-1
370x410x400mm



LAVASA
OB-2
410x395x275mm



NERO WB-1
475x340x140mm



ROME WB-2
460x350x160mm



NIKKI WB-3
470x375x180mm



SOUL
CB-1
685x495x190mm



SHAWN
CB-2
610x460x200mm



ARIKA CB-3
580x460x155mm



ENZO CB-4
390x390x160mm



EMOLA CB-5
415x415x160mm

BABY URINAL
UL-1
300x250x500mm



BRUCK TT-1 B
340x340x140mm



ELIPS TT-2 B
710x385x145mm

BLACK COLLECTION



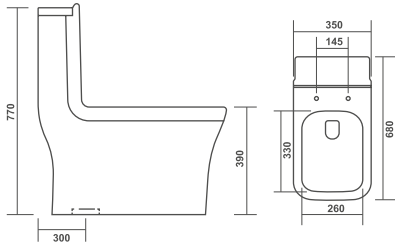
your global partner

PREMIUM SANITARYWARE

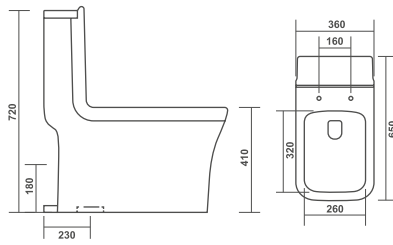
A large, light gray graphic of a hexagon with internal lines forming a complex geometric pattern, resembling a technical drawing or a stylized architectural element. It is centered on the page and has thin lines extending from its sides towards the edges of the page.

Technical DRAWING

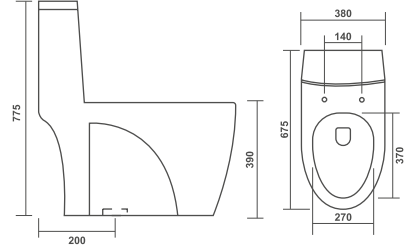
AQUA OP-1



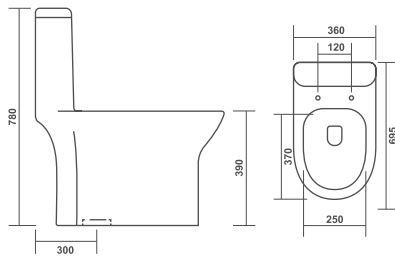
METRO OP-2



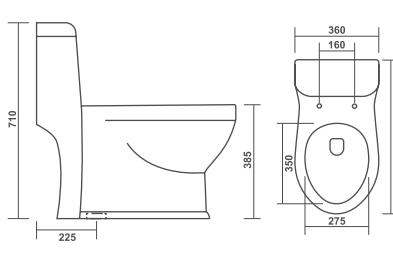
VENUS OP-3



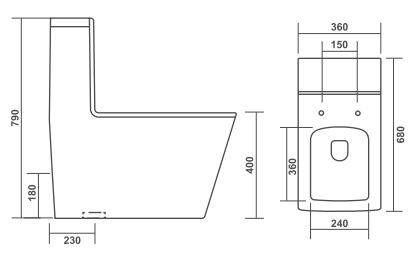
FLORENCE OP-4



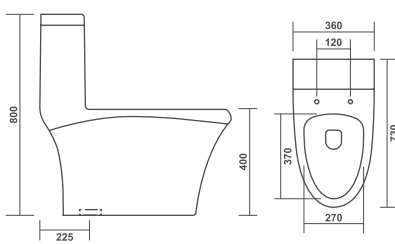
ALBA OP-5



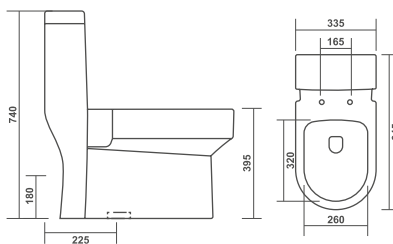
CRETA OP-6



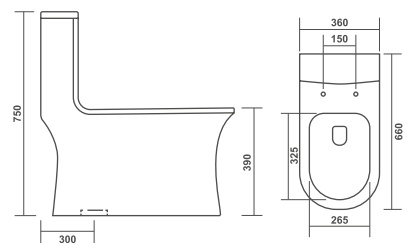
LACERA OP-7



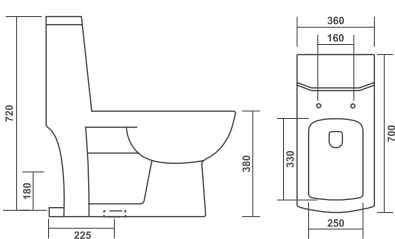
CHERRY OP-8



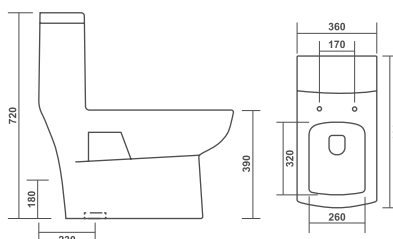
VENICE OP-9



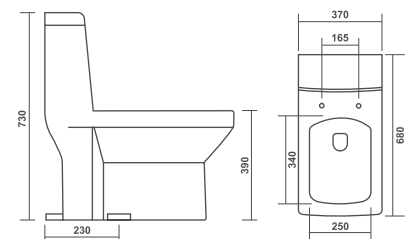
ELISA OP-10



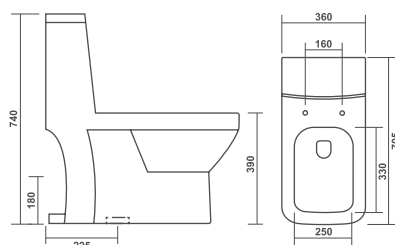
CHARLY OP-11



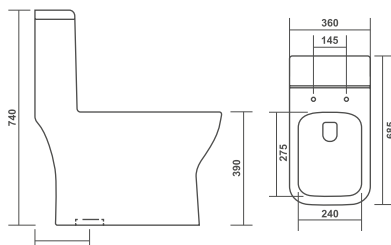
STROM OP-12



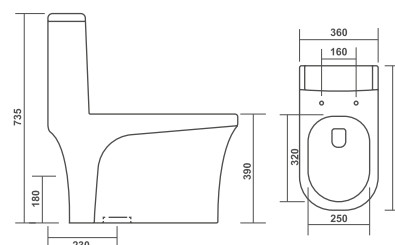
FOGO OP-13



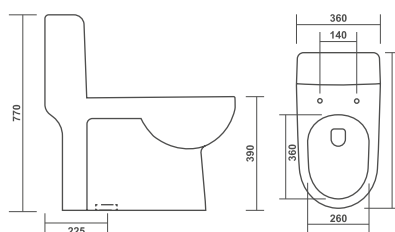
MONALISA OP-14



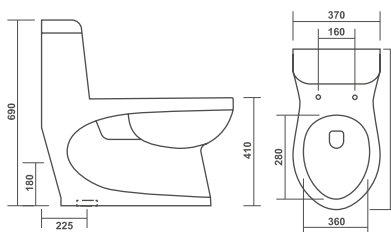
DENIAM OP-15



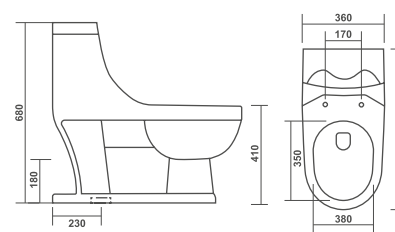
ZINNIA OP-16



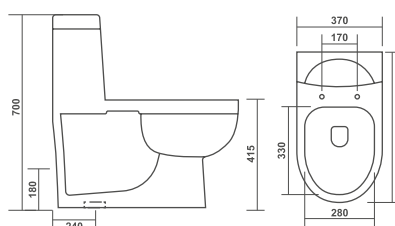
CRISTY OP-17



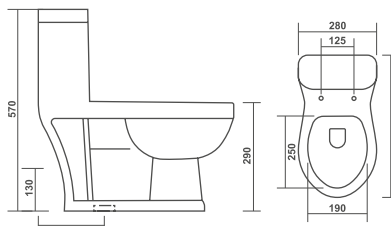
CAMRY OP-18



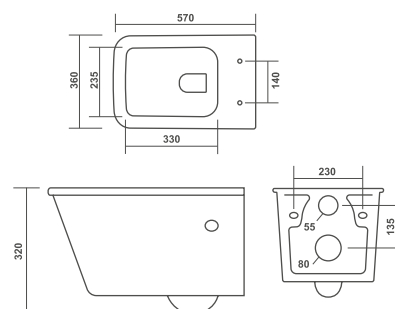
CARGO OP-19



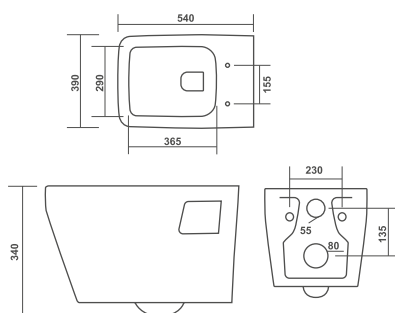
BABY OP-20



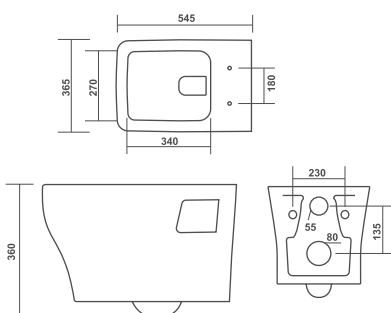
NORM WH-1



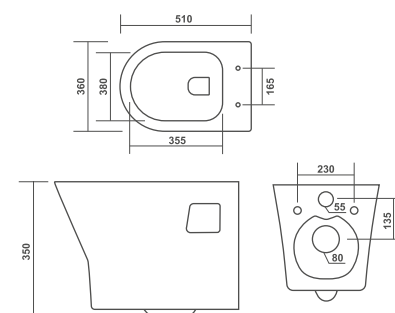
VITO WH-2



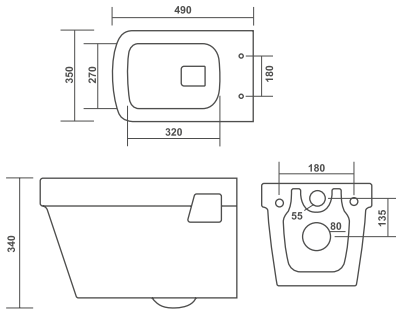
ELEMENT WH-3



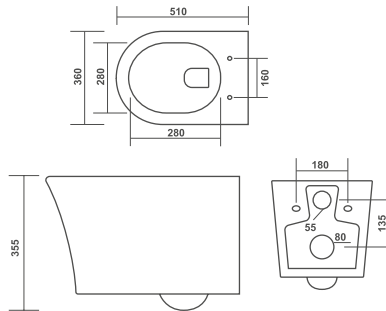
ZITA WH-4



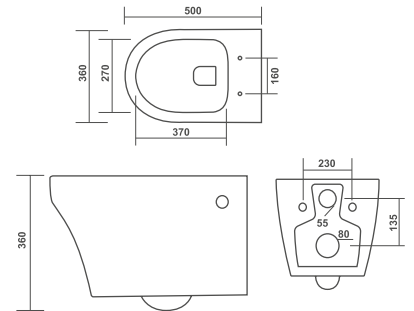
ELEGANT WH-5



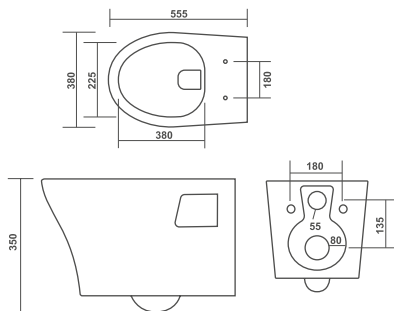
ARIN WH-6



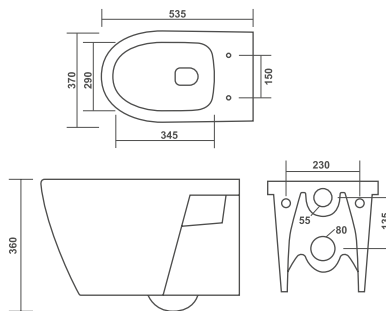
AERON WH-7



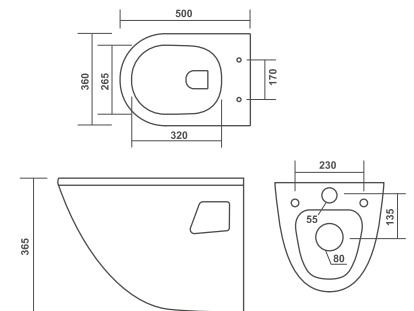
DYNA WH-8



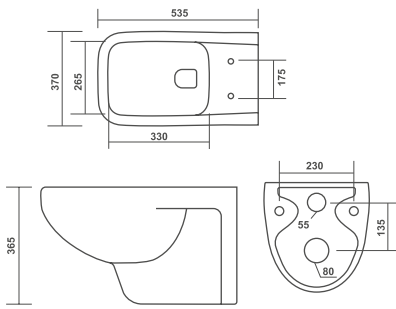
COCO WH-9



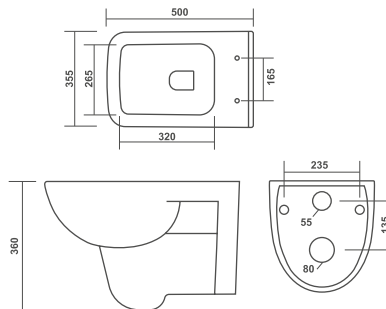
CROMA WH-10



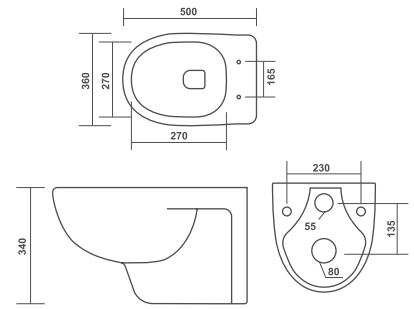
CRUSE WH-11



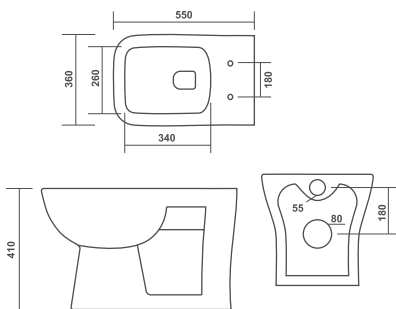
AUDI WH-12



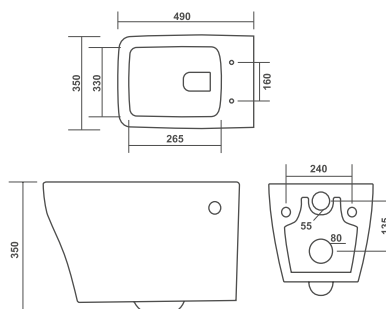
CALIBER WH-13



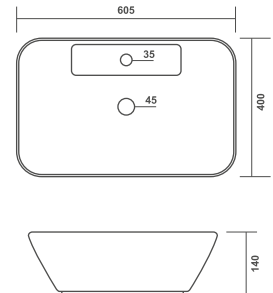
RUBY WH-14



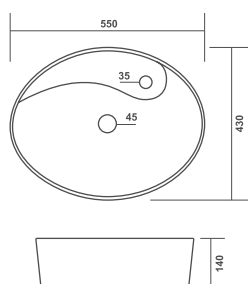
MINI ELEMENT WH-15



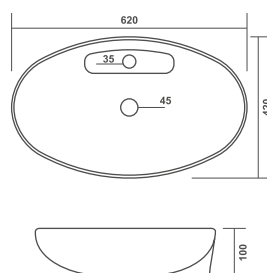
BRUNA TT-1



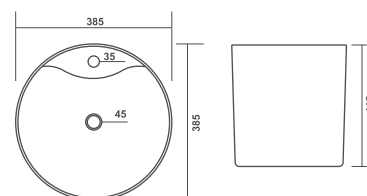
BERLIN TT-2



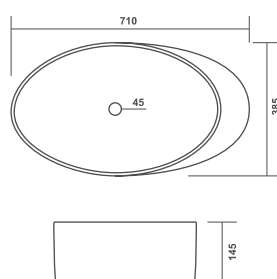
SCOLA TT-3



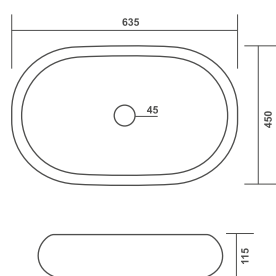
ETHOS TT-4



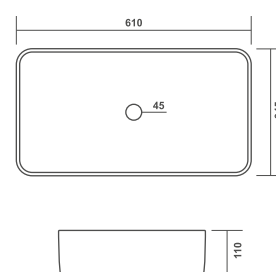
ELIPS TT-5



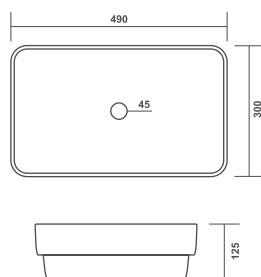
MONTIJO TT-6



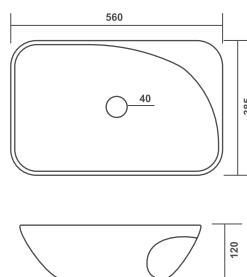
HELIX TT-7



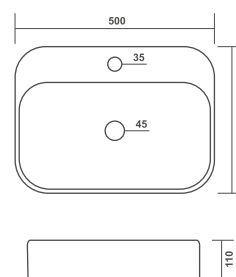
SLOG TT-8



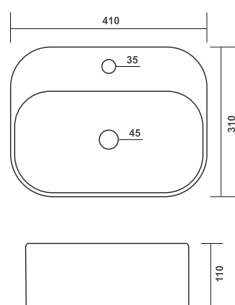
ELENA TT-9



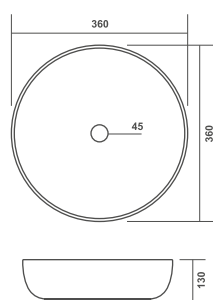
JAZZ TT-10



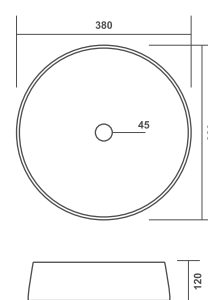
MINI JAZZ TT-11



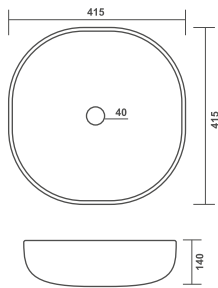
MADRID TT-12



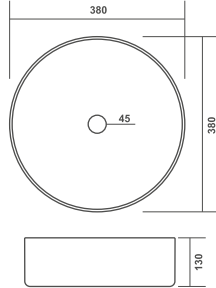
FLORIDA TT-13



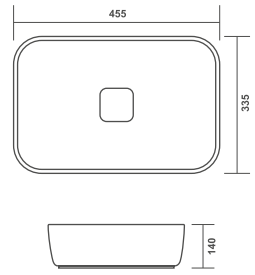
MARVEL TT-14



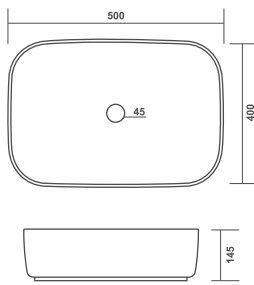
SOFT TT-15



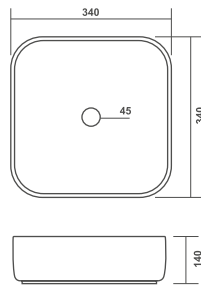
MINI STEELA TT-16



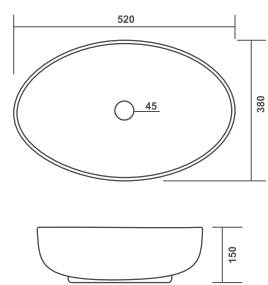
STEELA TT-17



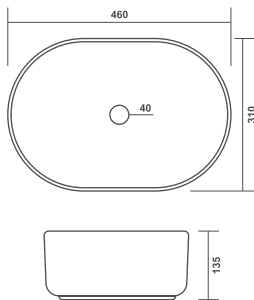
BRUCK TT-18



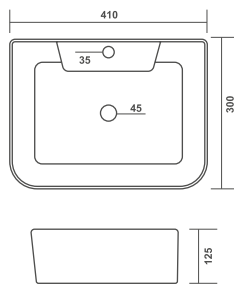
SOPIE TT-19



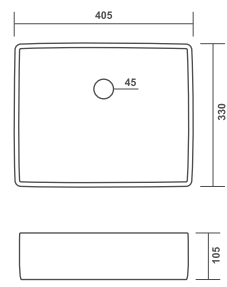
ASTRON TT-20



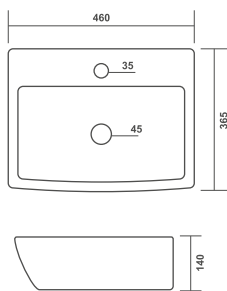
JEFF TT-21



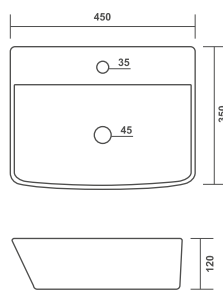
SIGMA TT-22



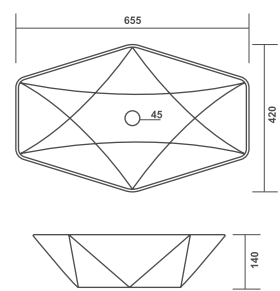
ORBIT TT-23



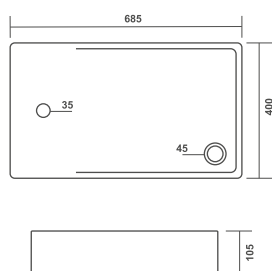
RECTA TT-24



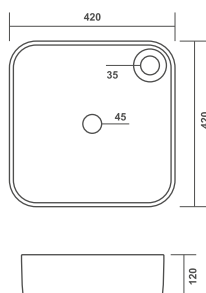
STAR TT-25



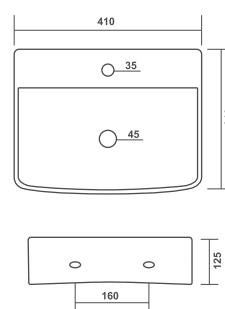
OPAL TT-26



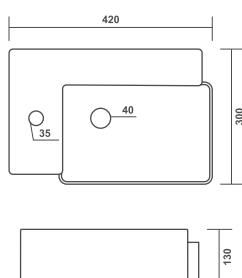
NEON TT-27



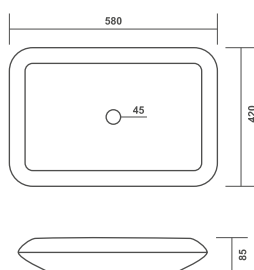
PRISAM TT-28



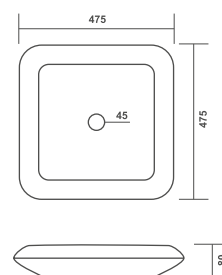
MAX TT-29



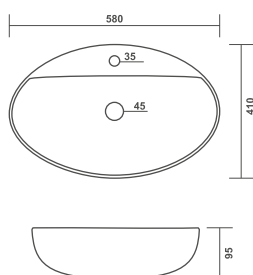
PEARL TT-30



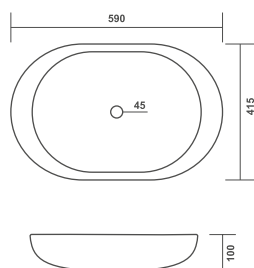
SMART TT-31



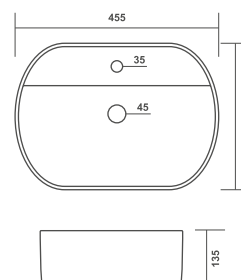
SAFRY TT-32



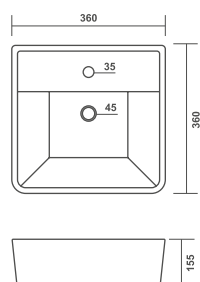
DOME TT-33



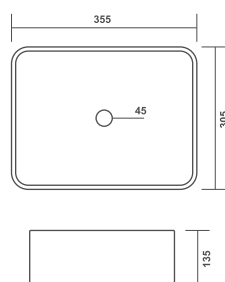
AMPLE TT-34



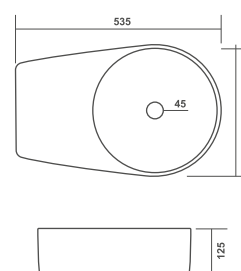
DÉCOR TT-35



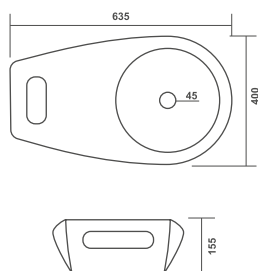
RITZ TT-36



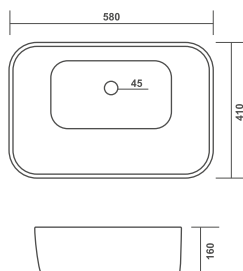
CORIS TT-37



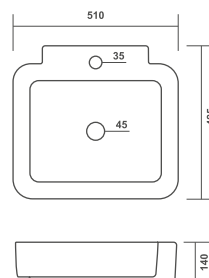
RIO TT-38



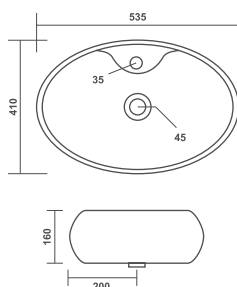
ROSA TT-39



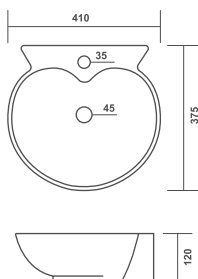
BROVIA TT-40



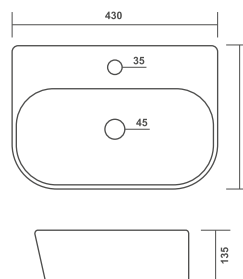
PRIME TT-41



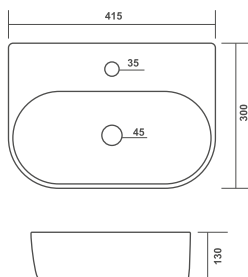
SPIRIT TT-42



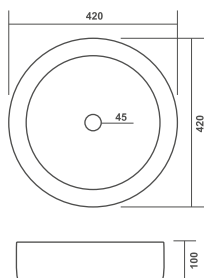
JACK TT-43



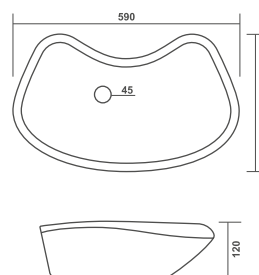
MARRY TT-44



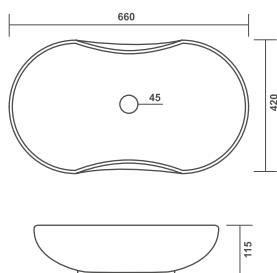
ORCHID TT-45



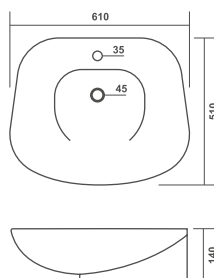
KOROLINA TT-46



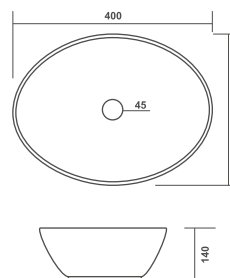
TULIP TT-47



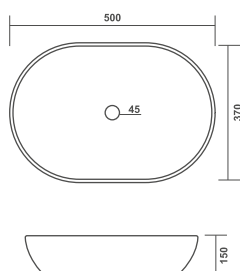
SPELL TT-48



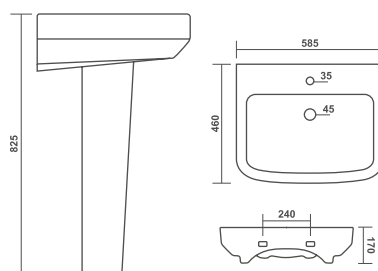
OMINI TT-49



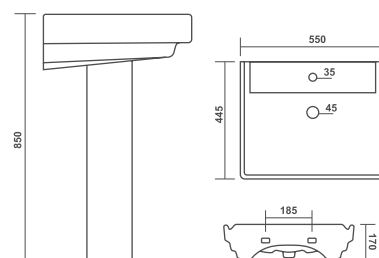
RUBIC TT-50



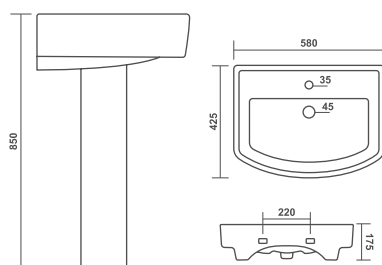
REPOSE PB-1



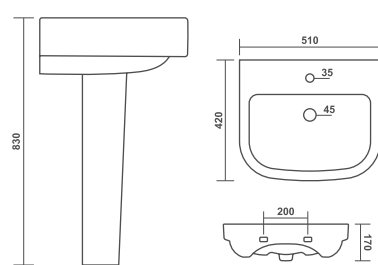
LORAL PB-2



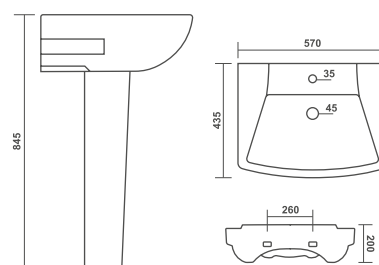
PARISH PB-3



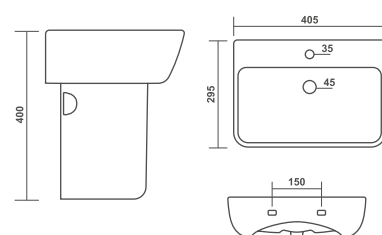
COLADO PB-4



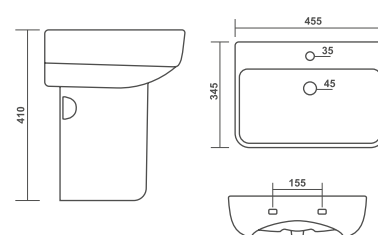
PLAZA PB-5



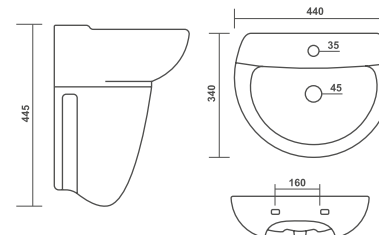
MORIS HP-1



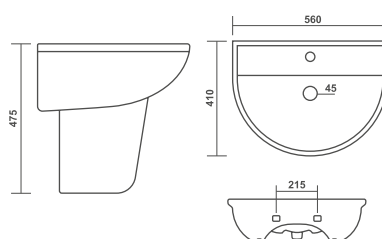
SIMI HP-2



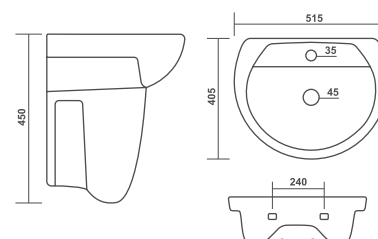
PETAL HP-3



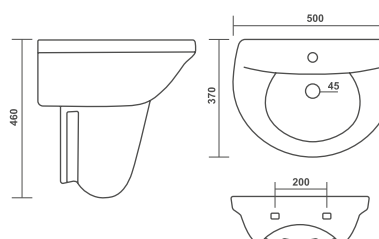
CANAN HP-4



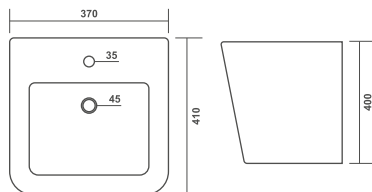
POLITE HP-5



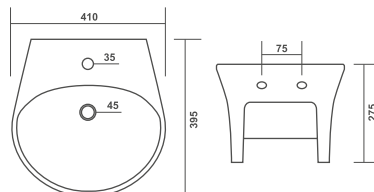
ALTIN HP-6



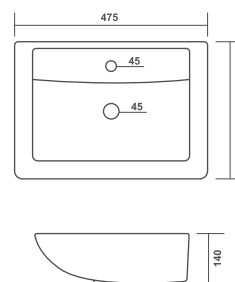
COMPAQ OB-1



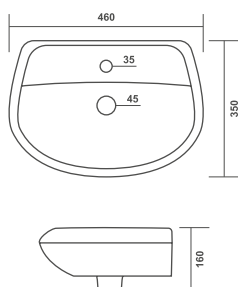
LAVASA OB-2



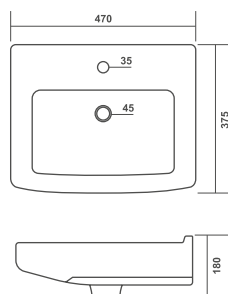
NERO WB-1



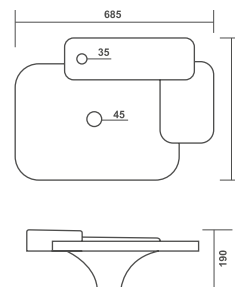
ROME WB-2



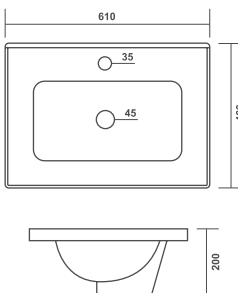
NIKKI WB-3



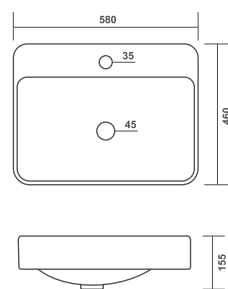
SOUL CB-1



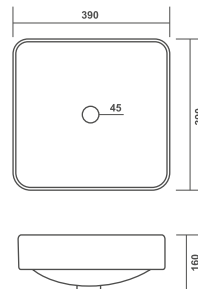
SHAWN CB-2



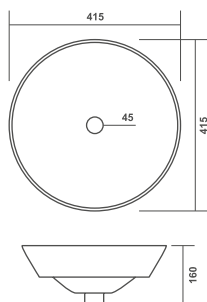
ARIKA CB-3



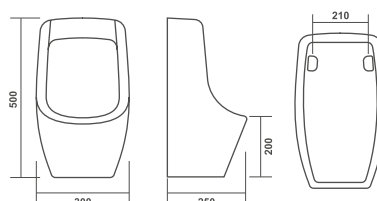
ENZO CB-4



EMOLA CB-5



BABY URINAL UL-1



COLOR RANGE



White



Ivory



Matt White

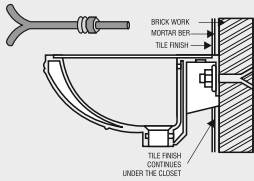


Black



Matt Black

Colours printed above may differ from original colours of ceramics.



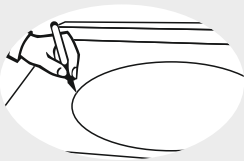
WALL HUNG BASIN

As per shown in the picture, the rag bolt must be grouted into the cement/concrete wall. The bolts must be fixed to the cement/concrete wall. Allow setting & checking than install it using nut and washer.

COUNTER WASHBASIN

At the beginning

1. A skilled or experienced person should install counter lavatories.
2. Avoid using adhesive with this product.
3. Check the waste area and supply tubing if required.
4. Do not open the lavatory from its protective carton until you are ready for installation.
5. Please follow all local building and plumbing codes.



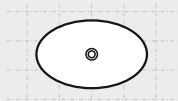
MATERIAL & TOOLS

Measure tape, Keyhole or saber saw, Hammer, Glasses, Rags or Paper toweling, Drill (1/2 dia, drill bit or larger), Pencil, sealant, sharp knife or scissors.

INSTALLATION OF LAVATORY

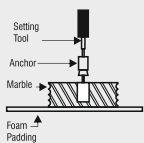
Please Note : Please install it in a way that future removal from underneath the counter top is possible without damaging the counter top.

1. Please check the desired location for clearance between the back splash, faucet, Fixture and cabinet.
2. Please cut the template.
3. Please carefully trace the template on the counter top directed.
4. Please mark the faucet hole centerline on the counter top.
5. Please drill a 1/2" pilot on the inside of the cut line.



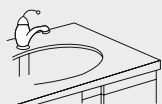
For Wood Counter tops:

1. Mark and pre-drill the wood screw holes at the locations shown on the template.
2. Waterproof any exposed areas of wood.



For Marble Counter tops:

1. Position the counter top upside down on foam padding to protect the surface. Mark and drill 3/6" holes 5/8" deep at the locations shown on the template.
2. Use a setting tool and hammer to secure the anchors.



For All Installations:

1. If the counter top has not been installed, install it at this time.
2. Drill the faucet holes according to the faucet installation instructions.
3. Install the faucet to the counter top according to the manufacture's instructions.
4. Install the drain to the lavatory according to the manufacture's instructions.

MAINTENANCE

Like any other part of your house, the bathroom can be made to look great and made to last long if it is taken care of regularly. To make your bathroom beautiful here are some invaluable tips.

Wash Basin :

A mild detergent can be used to wash the basin at least once a day. After washing, the basin should be wiped out clearly to avoid water stains.

Closets :

Cleanser like Harpic can be used to clear the closet with soft plastic brush, at least once a day.

To avoid minute discoloring, after flushing the toilet give it a once over with the soft brush.

Keep the toilet brush handy in a convenient stand nearby.

In case of toilets and basins, if there has been no maintenance since long period of time, water deposits and discoloration can form on the surface of areas that get wet. In such cases, these stains/marks can be removed with the help of a solution of dilute hydrochloric acid.

Clean with a soft cotton cloth and warm water with soap.

Do not use thinner, day cleaning liquids or powder paste. Use a liquid cleaner at least twice a week.

Use brasso or car rubbing compound and then polish with a cloth to remove fine scratches.



your global partner

Regd. Office:

JCBL India Pvt. Ltd.

Plot No. 580, Industrial Area Phase-9, Sector-66,
S.A.S Nagar, Mohali - 160062, Punjab, INDIA

Mobile: +91 98759 37754, +91 98759 08319

E-Mail: sales@jcblfurnishing.com

Website: www.jcblfurnishing.com